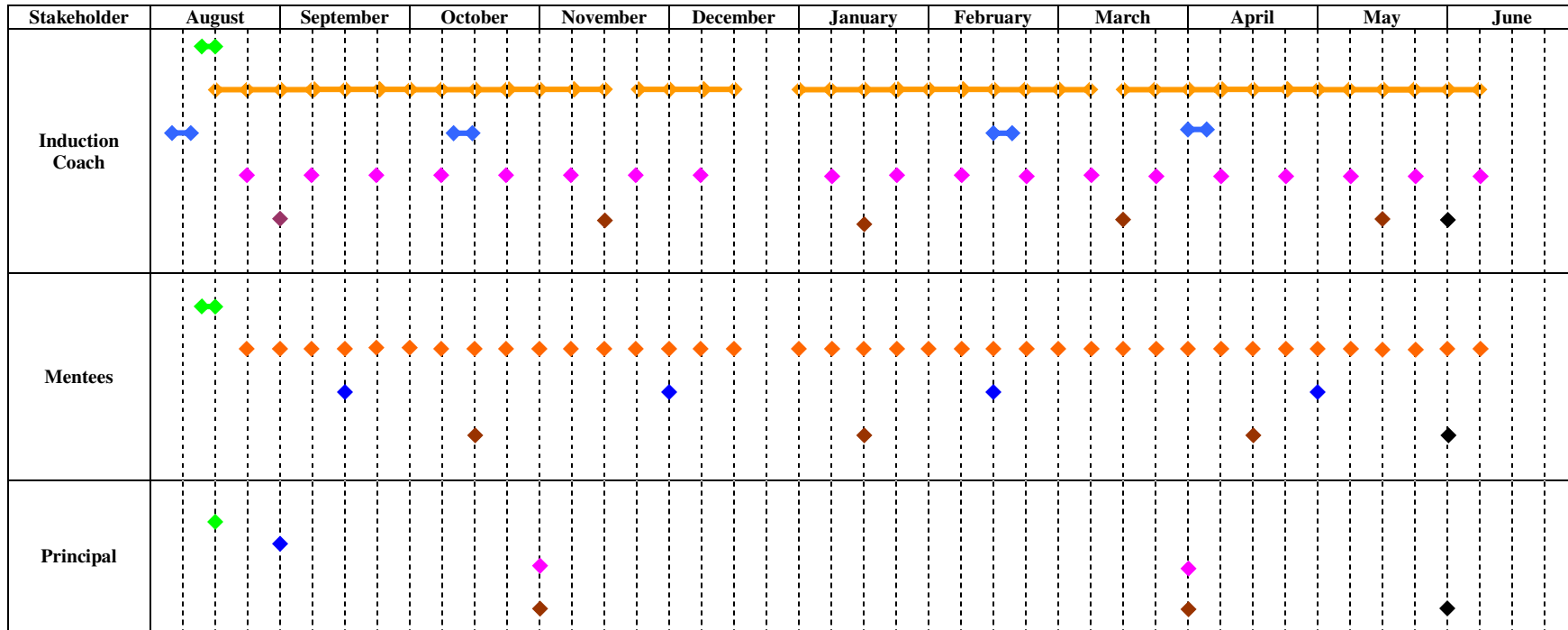


## GWAEA Full Release Mentoring and Induction Consortium Interaction and Professional Development Matrix



Key	Induction Coach	Mentees	Principal
	Orientation (1-2 days)	Orientation (1-2 days)	Orientation (1 day)
	Weekly Interaction w/ each of 12-15 mentees (1-2 hours) <ul style="list-style-type: none"> <li>Modeling</li> <li>Instructional Planning</li> <li>Observation, Coaching</li> <li>Data Analysis</li> </ul>	Weekly Interaction with Induction Coach (1-2 hours)	
	Professional Development <ul style="list-style-type: none"> <li>Foundations in Mentoring and Formative Assessment (3 days)</li> <li>Coaching and Observation (3 days)</li> <li>Analysis of Student Work (3 days)</li> <li>Designing and Presenting Professional Development for New Teachers (3 days)</li> </ul>	Professional Development <ul style="list-style-type: none"> <li>Beginning Teacher Forums (4 – 2 hour modules)</li> <li>Optional: Beginning Teacher Network (Online)</li> </ul>	Professional Development <ul style="list-style-type: none"> <li>Role of the Principal in High-Quality Teacher Induction (1 day)</li> </ul>
	Mentor Forum Network Meetings <ul style="list-style-type: none"> <li>2-3 hour biweekly sessions</li> </ul>		Principal Breakfast Network Meetings (2 – 2 hour sessions)
	Mentor Accountability Growth Assessment (MAGA): <ul style="list-style-type: none"> <li>Self-Assessment and Set Goals</li> <li>Progress Monitoring</li> <li>Mid-year and End of Year Reflection</li> </ul>	Formative Assessment: <ul style="list-style-type: none"> <li>Program and Induction Coach Support</li> </ul>	Formative Assessment: <ul style="list-style-type: none"> <li>Program</li> </ul>
	Summative Program Evaluation: Implementation and Impact <ul style="list-style-type: none"> <li>Accelerated Teacher Development</li> <li>Retention</li> <li>Teacher Leadership</li> <li>Student Learning</li> </ul>		